

LOUISIANA BIRD RECORDS COMMITTEE

REPORT FORM

1. English and Scientific names: California Gull, *Larus californicus*

2. Number of individuals: 1

3. Locality: LOUISIANA: (parish) Cameron

Specific Locality: Ca. .5 mi W of Rec Center access to Broussard Beach

4. Date(s) when observed: 11/01/2018

5. Time(s) of day when observed: mid-morning

6. Reporting observer and address:

Paul Conover

Lafayette, LA

7. Other observers accompanying reporter who also *identified* the bird(s):

8. Other observers who independently identified the bird(s):

9. Light conditions (position of bird in relation to shade and to direction and amount of light): Overcast.

10. Optical equipment (type, power, condition): Zeiss 10s, Nikon D3300 with 200 mm lens

11. Distance to bird(s): The bird was about 30-40 yards away

12. Duration of observation: perhaps 10-15 seconds

13. Habitat: Gulf beach, tide line

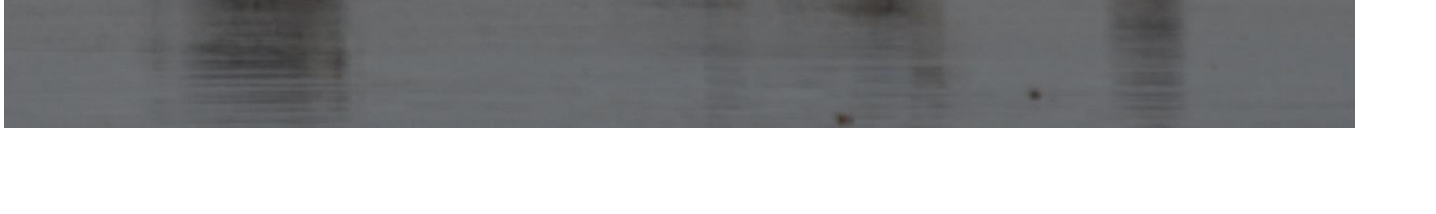
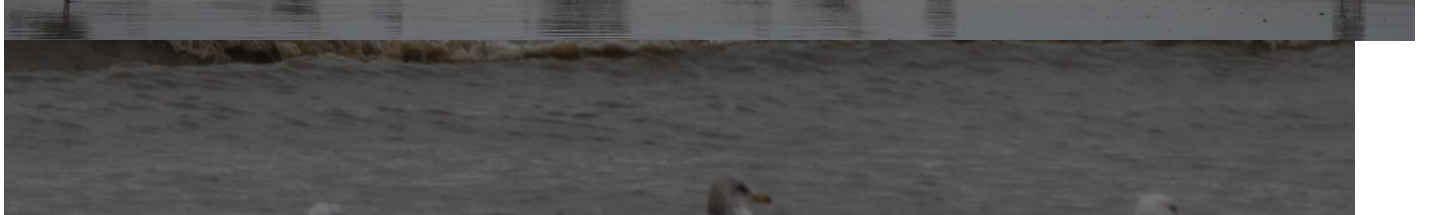
14. Behavior of bird / circumstances of observation: I had been scanning a skittish flock of gulls and terns, especially the big gulls. I think I had done a thorough job, but birds were arriving throughout my scan. As I drove alongside the flock, I saw one bird that seemed a bit darker than the Herrings and Ring-billeds, but not as dark as the LBBG in the flock. I looked at it through binos and saw the dark eye and yellow legs, etc., and reached for my camera. I snapped a dozen or so pictures, expecting to get better images through my scope and phone cam, but a bird or two left as I was trying to zero in on the bird, and apparently it was one of them. I expected to relocate it elsewhere in the flock, but never did. I think it probably landed, tried the flock out, then decided to keep going.

15. Description (include only what was actually seen, *not what "should" have been seen*; include if possible: total length/relative size compared to other familiar species, body bulk, shape, proportions, bill, eye, leg, and plumage characteristics. Stress features that separate it from similar species):

A long-bodied gull with wings extending well beyond tail tip. Mantle was a shade darker than Herrings, and bird was a little smaller, but larger than RBGU. Bird appeared to be third year or older; mantle was solid color with no noticeable retained feathers of younger age. Tertials had broad white crescents, tail was white in visible edge. Primaries were blackish with white tips, but pattern was not discernible. Remainder of body was white with darker flecking around eye and especially on hind neck. Bill was moderate in size, yellow, with an irregular black tip starting at about the gonys and extending distally. Tiny pale tip to bill. Slight reddish color on mandible on proximal edge of black tip was visible in initial bino view and I think I see a hint of it in photos. Eye dark, brownish. Legs yellow.









16. Voice: N?A

17. Similar species (include how they were eliminated by your observation):

Among expected gulls, Ring-billed Gull smaller, paler above, with pale eye and more distinct ring on bill, no reddish tone on bill, Herring larger, paler, with pink legs in most cases, pale eye. LBBG noticeably darker.

18. Photographs or tape recordings obtained? (by whom? attached?): Photos, attached.

19. Previous experience with this species: Decent amount in LA and CA.

20. Identification aids: (list books, illustrations, other birders, etc. used in identification):

a. at time of observation:

b. after observation:

21. This description is written from: memory, photos

22. Are you positive of your identification if not, explain: Yes.

23. Date: 11/2/2018