

SIXTH REPORT OF THE LOUISIANA ORNITHOLOGICAL SOCIETY BIRD RECORDS COMMITTEE

Donna L. Dittmann, Museum of Natural Science
Louisiana State University, Baton Rouge, LA 70803

The Louisiana Bird Records Committee (LBRC) has completed review of 108 records since the publication of its last report (Schulenberg 1988). Included in this report are three species new to the Louisiana bird list: Arctic Tern, Virginia's Warbler, and Hooded Oriole. These additions increase the state list to a total of 426 species. The second state records of Mongolian Plover, Arctic Tern, and Hammond's Flycatcher, and the third state records of Purple Sandpiper and Townsend's Warbler are also included. Other outstanding records include the first well-documented reports of Ferruginous Hawk and Snowy Owl.

The records are grouped into accepted and unaccepted categories. Unaccepted records are further divided into two groups depending on whether they were rejected on the basis of identification or origin. Only 27 of the 108 records were considered unacceptable (25 unacceptable identification, 2 uncertain origin), an overall acceptance rate of 76%. A brief discussion follows all records judged unacceptable. Within each category, the records are listed by species, following the nomenclature and taxonomic sequence of the *Check-list of North American*

Birds (AOU 1983) and its thirty-fifth supplement (AOU 1985). Within each species, records are arranged chronologically and include number of individuals, age, and sex (when available), LBRC file reference number, date(s) of observation, locality, and observers. Complete names are given for those observers who submitted reports. The names of additional observers, when mentioned by the reporting observer(s), are listed by their initials. The name(s) of the original discoverer/identifier, when this information is available, is boldfaced. The names of observers are not included for unaccepted records. Abbreviated credits for photographs (ph) and specimens (LSUMZ) immediately follow the name of the person that obtained that documentation. Other abbreviations used for month, National Audubon Society Christmas Bird Counts, and frequently repeated localities are listed at the end of the report. References are given for records which have been published.

All documentation for records submitted to the LBRC, including photographs and specimens, and all LBRC member comments and votes, are housed at the Louisiana State University Museum of Natural Science (LSUMNS), Baton Rouge. Documentation is available for inspection by appointment with the

secretary. A complete list of species currently subject to review follows the species accounts, along with a discussion of the criteria employed in adding to or deleting from this list.

The following LBRC members voted on all or part of the records treated in this report: Steven W. Cardiff, D. Bruce Crider, Donna L. Dittmann, Horace H. Jeter, Paul M. McKenzie, David P. Muth, B. Mac Myers III, Robert J. Newman, Robert D. Purrington, J. V. Remsen, Thomas S. Schulenberg, and Alfred E. Smalley.

Accepted Records:

WESTERN GREBE

One (86-2) on 21 Dec. 1985, (SACBC) *Cameron*: Hwy. 27 at Mud Lake, N Holly Beach; **Fred Barry**, JPS (c), A&GS, JW, GO, CK, RN. This was apparently one of two different birds thought to be present, as reported in Newman (1986, p. 874, 1052). Muth (1986, p. 290) also reported two birds present until 11 Jan. 1986. Documentation for the other individual has never been submitted.

One (87-3) on 20 Dec. 1986 SACBC, *Cameron*: Mud L.; **John P. Sevenair**, A&GS (Cardiff and Dittmann 1987, p. 561, 1033).

BLACK-BELLIED WHISTLING DUCK

One in adult plumage (89-11) on 9 Apr. 1988, *Jefferson Davis*: SSW

Jennings, 4.6 mi. S Hwy. 1126 on Parish Rd. 2-11; **Steven W. Cardiff** & Donna L. Dittmann. Imhof (1988, p. 445) reported that this individual was also present on 16 Apr. 1988. The 16 Apr. observation was, however, from a different locality and has never been submitted.

ROSS'S GOOSE

Three adults (88-5) on 25 Dec. 1987, *Jefferson Davis* along Interstate 10, 10 mi. W Jennings; Paul Lehman, Shawneen Finnegan (Muth 1988, p. 275).

Two adults (88-2) on 16 Jan. 1988, *Acadia*: 5 mi. SE Morse; **John Bates**, J. V. Remsen, Peter Scott.

One adult (88-3) on 16 Jan. 1988, *Acadia*: ca 5 mi. SE Morse; Peter Scott, J. V. Remsen, JB. Muth (1988, p. 275) reported #88-3 but did not mention #88-2.

BLACK-SHOULDERED KITE

Two (82-47) on 26 Oct. 1979, *Vermilion*: Live Oak Plantation; Julius Cooper, CRG, EPP (ph).

One in juvenal plumage (86-64) on 21 June 1986, *Cameron*: EJW; **Steven W. Cardiff**, DLD (Jackson 1986, p. 1214).

One (87-21) on 22 Jan. 1987, *Cameron*: Hwy. 82, just E Sabine Pass; J.P. Kleiman, JG (Muth 1987, p. 291).

One adult (89-21) on 13 Oct. 1988, *Cameron*: East Jetty, 1 mi. S Cameron; Paul McKenzie.

One adult (89-19) on 22 Oct. 1988,

Cameron: Hwy. 82, ca 5 mi. W Holly Beach; Al & Gwen Smalley, TK.

One adult (89-20) on 23 Oct. 1988, *Cameron:* "Rutherford Beach"; Paul McKenzie, PES, DV. Purrington (1989, p. 116) reported seven individuals from S.W. Louisiana between 22 Oct. and 27 Nov. 1988; this probably includes LBRC numbers 89-19 and 89-20.

Two (89-12) on 6 Nov. 1988, *Plaquemines:* one near Belle Chasse and one near Myrtle Grove; Norton Nelkin, RDP. Purrington (1988, p. 116) incorrectly cited the date of this record as 16 Nov.

Two adults (89-13) on 4 Dec. 1988, *Cameron:* Lacassine NWR; Charles A. Butterworth, SG (ph). Muth (1989, p. 325) reported that the occurrence of this species during winter period 1988-89 in "S.W. Louisiana

are too many to enumerate..."

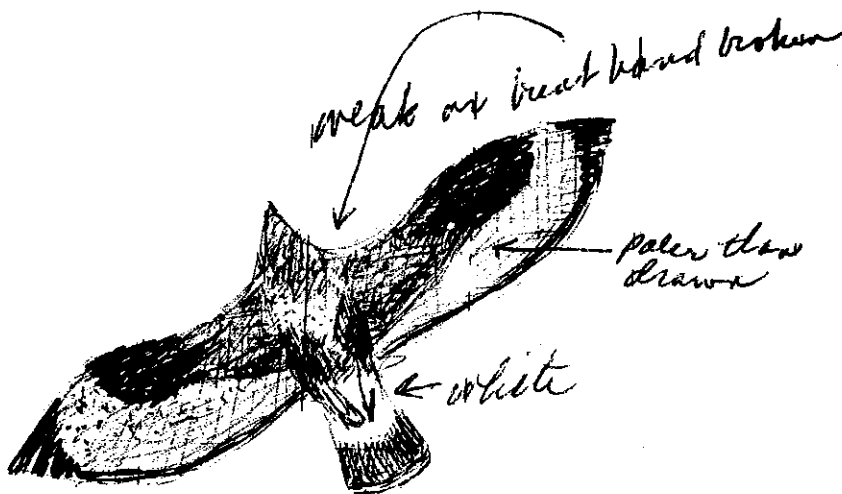
FERRUGINOUS HAWK

One adult light phase (89-18) on 22 Oct. 1988, *Cameron:* Hwy. 82, ca 5 mi. W Holly Beach; B. Mac Myers III (ph), Al & Gwen Smalley (ph), (Purrington 1989, p. 117). This is the first record of this species documented by photograph and the first officially reviewed and accepted by the LBRC.

ROUGH-LEGGED HAWK

One immature (89-16) on 22 Nov. 1988, *St. Tammany:* Hwy. 434, 1.3 km SW Lacombe; Al Smalley, GS, CK (Purrington 1988, p. 117).

One (89-9) on 26 Dec. 1988 (NOCBC) *Orleans:* N Blind Lagoon, near Big Oak Island; Paul McKenzie, JPS (Cardiff and Dittmann 1989, p. 599,



Immature Rough-legged Hawk at Goose Point, St. Tammany Parish, Louisiana, 22 November 1988. Field sketch by Gwen Smalley.



Immature female Yellow Rail captured in Jefferson Davis Parish, Louisiana, 5 November 1988. Photograph by Donna L. Dittmann.

985). Muth (1989, p. 325) incorrectly reported the date of this observation as 31 Dec. 1988.

GOLDEN EAGLE

One first year (89-68) on 26 Nov. 1986, *Jefferson Davis*: 6 mi. S Welsh on Hwy. 99; Donna L. Dittmann (ph), found injured by **William Evans** and brought alive to LSUMNS. It was transferred to the LSU Raptor Rehabilitation Unit, released on 1 May 1987, *Cameron*: Lacassine NWR; DLD (Imhof 1987, p. 446). The rehabilitation and release of this bird was well publicized. Articles appeared in the *State Times Morning Advocate Sunday Magazine* (10 May 1987, ph), *Alexandria Daily Towntalk* (10 May 1987, ph), and *Jennings Daily News* (3 May 1987). This is the first record of this species reviewed by the LBRC.

YELLOW RAIL

At least nine (89-56) on 5 Nov. 1988, *Jefferson Davis*: 1 mi. N junction Hwy. 14 on Hwy. 99; Steven W. Cardiff (one specimen, LSUMZ #137882, imm. female, ph) & **Donna L. Dittmann**, CM. Purrington (1989, p. 117) erroneously reported the date of this observation as 15 Nov. 1988, and that "one captured by hand [was] (later released)."

Five (89-15) on 11 Nov. 1988, *Acadia*: Hwy. 91, S Morse; Gwen Smalley, DPM, RJ.

MONGOLIAN PLOVER

One male in worn juvenal plumage molting to basic plumage (87-14) on 18 Oct. 1986, *Cameron*: 7 mi. W OMMR; **Donna L. Dittmann** and **Steven W. Cardiff** (LSUMZ #131036), GHR (Purrington 1987, p. 100). This is the

second record for Louisiana.

PURPLE SANDPIPER

One in basic plumage (89-42) from 17 Dec. 1988 (SACBC) -2 Apr. 1989, *Cameron*: Cameron, East Jetty (1/2 mi. S Calcasieu Pass); **Donna L. Dittmann** (ph), JS (Cardiff and Dittmann 1989, p. 599, 987); Stephen J. Schoech on 28 Jan. (Muth 1989, p. 326); Janice Nichols, T & AM on 30 Mar. or 1 Apr.; Steve P. Gary, CB, HM on 2 Apr. Presumably all sightings pertained to the same individual. This is the third state record.

RUFF

One adult female (89-10) on 30 Apr. 1988, *Vermilion*: 2 mi. N Kaplan, NE junction Hwys. 35 and 700; **Steven W. Cardiff**, SAR, GR, GSh (Imhof 1988, p. 447).

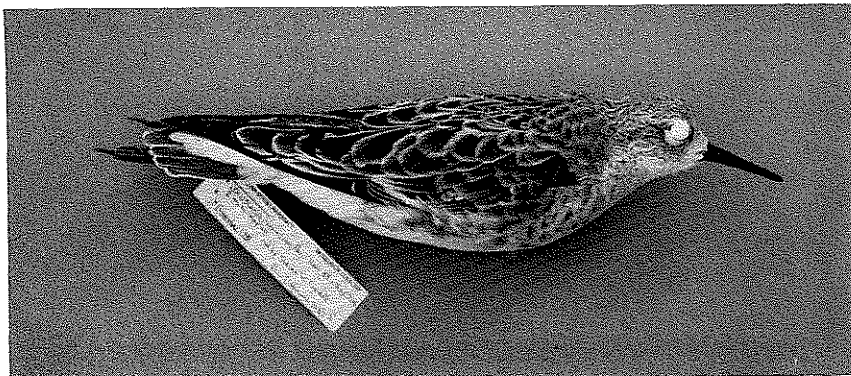
One adult female (89-54) on 21 Oct.-5 Nov. 1988, *Vermilion*: 2 mi. N Kaplan, NE junction Hwys. 35 and 700; Al & Gwen Smalley, **B. Mac Myers**

III (ur), SWC (LSUMZ #137883), DLD, JVR, m.ob. This and the previous record are from the same locality. Although they are treated as distinct, the potential exists that only one bird was involved.

One (89-55) on 23 Oct. 1988, *Vermilion*: Parish Road 5-19, 0.4 mi. W Hwy. 699; **Curtis A. Marantz**, JVR, PPM, MMS. This, and the previous record, were referred to by Purrington (1989, p. 117) as "two in rice fields of *Vermilion*, LA...between Oct. 23 and Nov. 4."

One in basic plumage (89-78) on 16 Dec. 1988 (CRCBC), *Vermilion*: 5 mi. NW Kaplan; **David N. Pashley**, **Kenneth V. Rosenberg** (ph), DW, MG, PPM (Cardiff and Dittmann 1989, p. 589, 981; Muth 1989, p. 326).

One (89-90) on 16 (CRCBC) and 18 Dec. 1988, *Acadia*: ca 6 mi. SSE Crowley; Al & Gwen Smalley, David P. Muth, BMM, JPS, JH (Cardiff and Dittmann 1989, p. 589, 981; Muth 1989, p. 326).



Adult female Ruff collected near Kaplan, Vermilion Parish, Louisiana, on 5 November 1988 (LSUMZ #137883). Photograph by Steven W. Cardiff.

RED-NECKED PHALAROPE

One female in worn juvenal plumage (86-71) on 1 Nov. 1986, *Cameron*: 1 mi. E mouth Calcasieu Pass; J.V. Remsen (LSUMZ #131084; Purrington 1987, p. 101).

POMARINE JAEGER

One worn sub-adult male (86-74) on 5 July 1986, *Cameron*: 6 mi. W Holly Beach; Ronald J. Stein (LSUMZ #130501), MW (Jackson 1986, p. 1215).

One adult in basic plumage (87-18) on 20 Dec. 1986 (SACBC), *Cameron*: 2 1/2 mi. S Calcasieu Pass; **Donna L. Dittmann**, JS (Cardiff and Dittmann 1987, p. 561, 1035; Muth 1987, p. 292.)

PARASITIC JAEGER

Two in immature or basic sub-adult plumage (87-16) on 20 Dec. 1986 (SACBC), *Cameron*: 3-4 mi. SE Calcasieu Pass and 2 1/2 mi. S Calcasieu Pass; **Donna L. Dittmann**, JS.

One sub-adult (87-17) on 20 Dec. 1986 (SACBC), *Cameron*: approx. 3-4 mi. SE Calcasieu Pass; **Donna L. Dittmann**, JS (Cardiff & Dittmann 1987, p. 561, 1035; Muth 1987, p. 292).

CALIFORNIA GULL

One in second basic plumage (87-15) on 27 Sep. 1986, *Cameron*: 5-7 mi. W OMMR; **Donna L. Dittmann** & Steven W. Cardiff, CEQ.

One adult female in basic plumage (87-6) on 28-29 Sep. 1986, *Cameron*: 5 mi. W OMMR; **Steven W. Cardiff**

(LSUMZ #131090) & **Donna L. Dittmann**, CEQ. Purrington (1987, p. 101) reversed the ages of this and the preceding individual.

One adult female in basic plumage (89-63) on 23 Oct. 1988, *Cameron*: 8 mi. W OMMR; **Steven W. Cardiff** (LSUMZ #138117), DLD.

One adult female in basic plumage (89-65) on 23 Oct. 1988, *Cameron*: 3 mi. W OMMR; **Steven W. Cardiff** (LSUMZ #138119) & **Donna L. Dittmann**. This and the preceding record were reported in Purrington (1989, p. 118).

One in third alternate plumage (89-44) on 18 Feb. 1989, *St. Bernard*: Arabi, Crescent Acres Landfill; **Steven W. Cardiff**, **Curtis A. Marantz**, DPM. Muth (1989, p. 326) incorrectly reported the date as 19 Feb.

One in adult basic plumage molting to alternate plumage (89-79) on 28 Feb. 1989, *Cameron*: 5 mi. W Holly Beach (an individual seen later that day at East Jetty was probably the same bird); **Steven W. Cardiff** & **Donna L. Dittmann** (Muth 1989, p. 326).

THAYER'S GULL

One fourth year in basic plumage (89-76) on 27-28 Feb. 1988, *Plaquemines*: Venice; **Donna L. Dittmann** & **Steven W. Cardiff**, GS, on 28 Feb. also Crescent Bird Club members. Muth (1988, p. 276) erroneously reported the dates as 26-27 Feb.

LESSER BLACK-BACKED GULL

One in third basic plumage (84-41 B) on 17 Feb. 1985, *Cameron*: Johnsons Bayou; J.V. Remsen, DLD & SWC (c), GHR, NK, CC, G&DS, DPM. Muth (1985, p. 177) reported that this bird was present through the end of February and assumed that this individual was the same bird "located on the Johnsons Bayou CBC." Closer examination of the record during review indicated that two differently aged individuals were involved (see also Unaccepted 84-41 A).

One female in second alternate plumage (86-63) on 21-22 June, 20 July 1986, *Cameron*: 1 mi. E mouth Calcasieu Pass; Donna L. Dittmann, SWC (ph, LSUMZ #130504; Jackson 1986, p. 1215).

One in adult alternate plumage molting to basic plumage (87-7) on 27 Sep. 1986, *Cameron*: 5-7 mi. W OMMR; Donna L. Dittmann & Steven W. Cardiff, CEQ.

One (primarily in) adult alternate plumage molting to basic plumage (87-8) on 27-29 Sep. 1986, *Cameron*: 5-7 mi. W OMMR; Donna L. Dittmann & Steven W. Cardiff, CEQ.

One female in adult alternate plumage molting to basic plumage (87-9) on 28 Sep. 1986, *Cameron*: 5-7 mi. W OMMR; Donna L. Dittmann & Steven W. Cardiff (LSUMZ #130088), CEQ.

One female (primarily in) adult alternate plumage molting to basic plumage (87-10) on 12 Oct. 1986, *Cameron*: 6 mi. W OMMR; Donna L. Dittmann & Steven W. Cardiff (LSUMZ

#130089).

One in adult alternate plumage molting to basic plumage (87-11) on 12 and (most likely the same individual) 18 Oct. 1986, *Cameron*: 5-7 mi. W OMMR; Donna L. Dittmann & Steven W. Cardiff.

One in adult alternate plumage (87-12) on 18-19 Oct. 1986, *Cameron*: 5-7 mi. W OMMR; Donna L. Dittmann & Steven W. Cardiff. This and the preceding five records were reported by Purrington (1987, p. 101).

One in fourth year basic plumage (89-51) on 28 Feb. 1988, *St. Bernard*: Arabi, Crescent Acres Landfill; Donna L. Dittmann & Steven W. Cardiff, GS. Muth (1988, p. 276) erroneously reported the date as 27 Feb.; re-evaluation of the age (reported as a third year) indicated a bird in fourth basic plumage.

One female in first alternate plumage molting to second basic plumage (89-64) on 16 Oct. 1988, *Cameron*: 6 mi. W OMMR; Steven W. Cardiff (LSUMZ #138121) & Donna L. Dittmann. This record apparently was "one of four in *Cameron*" (Purrington 1989, p. 118).

One adult in basic plumage (89-72) on 18 Feb. 1989, *St. Bernard*: Arabi, Crescent Acres Landfill; Curtis A. Marantz, SWC, DLD, DPM, BMM, G&AS, DBC, PM. Muth (1989, p. 326) erroneously reported the date as 19 Feb.

GREAT BLACK-BACKED GULL

One in first basic plumage (86-72) on 5 Jan. 1985, *Lafourche*: 5 mi. W

Grand Isle; **Ronald J. Stein**, DPM (Muth 1985, p. 177).

ARCTIC TERN

One adult male in alternate plumage (89-48) on 5 June 1988, *Cameron*: 2 mi. W OMMR; **Donna L. Dittmann** & Steven W. Cardiff (LSUMZ #135933).

One adult in alternate plumage (89-47) on 21 June 1988, *Cameron*: 7 mi. W OMMR; **Donna L. Dittmann** & Steven W. Cardiff.

One immature male (89-49) on 21 June 1988, *Cameron*: 7 mi. W OMMR; **Donna L. Dittmann** & Steven W. Cardiff (LSUMZ #135934). These three records were mentioned by Jackson (1988, p. 1302) and are the first records for Louisiana. Although the latter two individuals were observed together and represent a single occurrence, they were reviewed separately because they were in different plumages and because one was collected and the other was a sight record.

SNOWY OWL

One probable immature male (89-23) on 13 Dec. (reported as first date in *Shreveport Times*) 1976-21 Feb. 1977, *Caddo*: Shreveport, Cross Lake; **Donna L. Dittmann** (submitted report based on information contained in LBRC files). Apparently many Louisiana observers saw this bird (Hamilton 1977, p. 341), but details have never been submitted to the LBRC. This is the first well-documented record for Louisiana.

LONG-EARED OWL

J. La. Ornith.

One adult female (89-66) on 17 Dec. 1988 (SACBC), *Cameron*: EJW; Steven W. Cardiff (LSUMZ #138125; Cardiff and Dittmann 1989, p. 599, 987; Muth 1988, p. 326).

BUFF-BELLIED HUMMINGBIRD

One male (86-50) on 15-19 Dec. 1985, *East Baton Rouge*: Baton Rouge, 5256 Cumberland; Paul McKenzie, CF (LSUMZ #126940), JVR, JK, SWC, DLD, CC, PES, DBC, LH, MMS, JF, DHa, SHo, MD, KVR, JAG, TJD. The bird was found dead after a hard freeze. Muth (1986, p. 291) reported that the bird was first observed on 7 Dec. 1985.

ANNA'S HUMMINGBIRD

One female (88-4) on 19 Dec. 1987 (SACBC), *Cameron*: Cameron (home of Marianna Tanner); **Paul Lehman & Shawneen Finnegan**, MT, NN (Cardiff and Dittmann 1988, p. 550, 945). Muth (1988, p. 278) reported that this individual was last seen on 21 Feb. 1988.

One immature male (89-8) on 23-24 Dec. 1988 and 5 and 8 Mar. 1989, *East Baton Rouge*: Baton Rouge, 1167 Verdun Drive (residence of Robert B. Hamilton); **Paul McKenzie** (netted; a few rectrices and gorget feathers plucked and included with Report Form), JK, CF, NN. Muth (1989, p. 326) reported that this bird was found on 12 Dec. 1988. These two records represent the fourth and fifth for Louisiana.

ALLEN'S HUMMINGBIRD

One adult male (89-7) on 24 Dec.

1988, *East Baton Rouge*: Baton Rouge, 1226 Glenmore (residence of Francis and Barbara Guglielmo); Paul McKenzie, JK, CK, BG. Muth (1989, p. 327) reported that this bird was present "from September (1988) to Feb. 15 (1989)."

HAMMOND'S FLYCATCHER

One immature male (84-28) on 27 Oct. 1984, *Cameron*: GR; **Tom Schulenberg** (LSUMZ #121700), NK (Purrrington 1985, p. 66). This is the second record for Louisiana.

ASH-THROATED FLYCATCHER

One (87-13) on 21 Dec. 1986 (JBCBC), *Cameron*: HR; **Steven W. Cardiff** & Donna L. Dittmann (Cardiff & Dittmann 1987, p. 561, 1036; Muth 1987, p. 293).

One male (89-1) on 1 Nov. 1986, *Cameron*: EJW; J.V. Remsen (LSUMZ #131101), RMZ. This record involves one of two individuals found together (Purrrington 1987, p. 102); the other (LBRC #89-61, also a specimen) is still under review.

One immature male (89-57) on 16 Dec. 1988 (CRCBC), *Acadia*: Lyons Point Gulley, 4 1/2 mi. E Morse; Steven W. Cardiff (LSUMZ #137896), **DLD** (Cardiff & Dittmann 1989, p. 599, 981; Muth 1989, p. 327).

BROWN-CRESTED FLYCATCHER

One immature male (89-62) on 8 Nov. 1987, *Cameron*: GR; **Steven W. Cardiff** (LSUMZ #135097), **DLD** (Purrrington 1988, p. 90). This is only

the fifth specimen for Louisiana.

GRAY KINGBIRD

One immature female (87-29) on 23-25 Oct. 1987, *Jefferson Davis*: 2 mi. E junction Hwys. 14 & 99; **A I Smalley**, **GS**, **S&NN**, **JS**, **CK**, **PS**, **JVR**, **SWC** (LSUMZ #135199), **DLD** (Purrrington 1988, p. 90).

BLACK-WHISKERED VIREO

One adult male (86-57) on 20 Apr. 1986, *Cameron*: **EJW**; **Paul Lehman** (ph, Imhof 1986, p. 485), Donna L. Dittmann, Steven W. Cardiff (LSUMZ #130583), **LB**, **DRW**.

One adult male (86-65) on 26 Apr. 1986, *Cameron*: Cow Island, 1 mi. W, 1/2 mi. N Rockefeller Refuge Hdqts.; Steven W. Cardiff (LSUMZ #130584) & **Paul Lehman**, **BED**, **DLD**, **DPM**, **DRW**, **CM**, **LB**.

One (86-66) on 27 Apr. 1986, *Cameron*: GR; **Paul Lehman**, Steven W. Cardiff, **DLD**, **DPM**, **LB**, **BED**, **DRW**, **CM**. The preceding records were reported in Imhof (1986, p. 485).

One adult female (89-59) on 6 June 1988, *Cameron*: ca 5 mi. E Cameron; Steven W. Cardiff (LSUMZ #138332; Jackson 1988, p. 1303).

VIRGINIA'S WARBLER

One immature female (89-58) on 17 Dec. 1988 (SACBC), *Cameron*: **EJW**; **Steven W. Cardiff** (LSUMZ #138249), **JVR**, **CC**, **CM** (Cardiff & Dittmann 1989, p. 599, 987; Muth 1989, p. 327). This is a first record for Louisiana.

TROPICAL PARULA

One immature male (89-60) on 22 Oct. 1988, *Cameron: ca. 5 mi. E Cameron; Steven W. Cardiff* (LSUMZ #138250), DLD (Muth 1989, p. 119). This is the second state record.

TOWNSEND'S WARBLER

One immature male (88-7) on 3 Jan. 1988 (THCBC), *West Feliciana: Rosedown Plantation; Ronald J. Stein, MW* (Cardiff & Dittmann 1988, p. 550, 947). Muth (1988, p. 278) erroneously reported this third state record as a fourth state record.

MACGILLIVRAY'S WARBLER

One adult female (86-60) on 29 Apr. 1986, *Cameron: HMBS; Douglas R. Willick, BED*.

SMITH'S LONGSPUR

Five, including at least two in basic plumage (89-77) on 26 Dec. 1988 (SHCBC), *Caddo: Shreveport, Shreveport Regional Airport; Charles Lyon, HJ*. The published CBC total (Cardiff & Dittmann 1989, p. 599, 988) should be amended to five.

HOODED ORIOLE

One adult male (87-24) on 20 Apr. 1987, *Cameron: HMBS; Diane E. Loria* (netted, ph.), HK, WY, JA (Imhof 1987, p. 447, Cardiff et al 1991). This is the first record for Louisiana.

HOUSE FINCH

One female (84-30) on 25 Dec.

1977-12 Mar. 1978, *Natchitoches: Natchitoches, 1619 McClellan Drive; Kenneth Shaw* (ph, banded), Harold E. Wales, CV, RN, JS (Hamilton 1978, p. 365).

One adult male and one female (89-26) on 24 May 1988, *East Baton Rouge: Baton Rouge, 2974 Reymond* (home of **Helaine Moyse**); Tom Schulenberg, JB, SH, KVR, AK. Moyse (pers. comm.) reported that the two birds were first observed during Feb.-Mar. 1988. The number of individuals increased to five during the summer, suggesting local breeding. The pair remained through the winter of 1988-89.

Unaccepted Records

The identification of the following records was considered unacceptable:

RED-THROATED LOON

One in basic plumage (84-9) on 3 Apr. 1984, *St. Tammany: Lake Pontchartrain at Fontainebleau State Park*. This record was decided on its fourth circulation. After an extensive discussion, this record was rejected. The combination of a single person sight record, the limited experience of the observer with this species, the range of variation in plumage and size exhibited by Common Loons, and the lack of additional supporting documentation (photographs) resulted in this decision. Although Lowery (1974) accepted four records for Louisiana, these records have never been re-evaluated by the LBRC.

RED-NECKED GREBE

One in basic plumage (89-24) on 20 Dec. 1975 (SACBC), *Cameron*: East Jetty. The slide included with this record and labelled by one of the observers is clearly that of an Eared Grebe. The record was accepted on the CBC list (Newman 1976, p. 174, 478); it should be removed from the CBC list.

One (or two?) (89-27) on 18 Dec. 1977, *Cameron*: West Jetty. The only available details for this record were written on an *American Birds* 3 x 5 card. The description was insufficient to document such an outstanding record.

One in basic plumage (84-40) on 17 Dec. 1977 (SACBC), *Cameron*: Mud Lake (Hamilton & Newman 1978, p. 436, 739). This record was only recently submitted to the LRBC. It was written from memory, seven years after the observation. The original documentation provided to the CBC compiler was lost and the observer did not retain any original notes. Most Members were opposed to the acceptance of such an outstanding record without original supporting documentation, although all agreed that the description did indicate this species. This is an excellent example of the necessity of keeping original documentation and field notes. There is still only one acceptable record of this species for Louisiana (Lowery 1974).

LIMPKIN

One (87-26) "approx." Apr. 1982, *St. Tammany*: Little Bayou Castain, 2 blocks S Hwy. 190. Although the description was suggestive of this

species, all Members felt that conclusive documentation would be required to provide evidence for a first state record. The description was very brief and written from memory five years after the observation.

BLACK-SHOULDERED KITE

One adult (86-5) on 15 Dec. 1985, *Caddo*: Hwy. 173, SW junction Hwy. 71. This record was considered unacceptable because the description was too brief to support the identification of even such an "unmistakable" species.

YELLOW RAIL

Five (89-6) on 21 Nov. 1988, *Acadia*: Hwy. 92, 1/4 mi. W Hwy. 1124, E Morse. This record was considered unacceptable primarily because of the superficial and brief description provided by the observer. Although most Members felt that the observer probably did see Yellow Rails, this record could not stand on the basis of the description.

MOUNTAIN PLOVER

"Hundreds" (86-61) on 25 Mar. 1986, *Cameron*: Gum Cove Road. The record included one color photograph, which, under close examination, revealed that these birds were basic plumaged Lesser Golden Plovers.

POMARINE JAEGER

One light phase sub-adult (89-73) on 10 Jan. 1989, *Cameron*: 2 mi. W Holly Beach. The bird was identified to

species primarily on the basis of flight behavior; there was no detailed plumage description. Members agreed that the information provided by the observer was not adequate to identify the jaeger to species.

PARASITIC JAEGER

One dark phase adult (86-24) on 8 Dec. 1985, *Cameron*: 2 mi. W OMMR (Muth 1986, p. 291). The observation was very brief and the description did not eliminate juvenile Long-tailed Jaeger.

One sub-adult or adult in basic plumage (86-26) on 2 Feb. 1986, *Cameron*: 6 mi. W Holly Beach (Muth (1986, p. 291). The brevity of the observation and the viewing conditions precluded elimination of Long-tailed Jaeger as a possibility.

LONG-TAILED JAEGER

One adult light phase in alternate plumage (88-1) on 3 Jan. 1988 (GICBC), *Jefferson*: Grand Isle. Although the details, and especially the accompanying drawings (most notably tail length and coloration of mantle and wings) were suggestive of this species, the duration of the observation (10-12 seconds) and distant viewing conditions (500 yards) were considered inadequate for a conclusive identification. Additionally, the size and some plumage characteristics reported by the observer were just as suggestive of Parasitic Jaeger. A winter record of an adult Long-tailed Jaeger in alternate plumage in the northern hemisphere would be so

outstanding as to require more conclusive documentation.

CALIFORNIA GULL

One in first basic plumage (86-69) on 25 Oct., 1986, *Cameron*: Cameron, East Jetty, 2 mi. S Cameron. The description is inadequate to separate this bird from similar species of gulls.

LESSER BLACK-BACKED GULL

One adult (84-41 A) on 16 Dec. 1984 (JBCBC), *Cameron*: Johnsons Bayou (Newman 1985, p. 416, 672). The description, provided by only one of the four observers, described the bird as having grayish-colored legs. Although Grant (1982) states that "3% in some large samples" of adult/fourth basic plumaged Lesser Black-backed can have fleshy or grayish legs he also indicates that these birds usually exhibit other signs of immaturity, such as retaining dark on the tip of the bill. As far as can be determined from the description, this bird had an adult type bill pattern. In addition to the anomalous leg color, the shade of the mantle was not well described, despite the fact that the observers had other species of gulls nearby for side by side comparisons. The eye color was reported as both dark and light. The description did not eliminate California Gull. A Lesser Black-backed Gull found at this locality after the CBC was initially assumed to be the same individual (Muth 1985, p. 177). Analysis of the plumage details of the 17 Feb. bird (84-41 B; see Accepted section) indicated that two different birds were involved. 84-41 B

was in third basic plumage and possessed a banded tail (84-41 A was an adult with an all white tail), which eliminated the possibility that 84-41 A and B were the same individual. This species should be deleted from the Johnsons Bayou CBC or changed to "*Larus* sp."

PAURAQUE

One (86-58) on 26 Apr. 1982, *Cameron*: Rockefeller State Wildlife Refuge, levee at end of Price Lake Road. The record is supported only by written details of a very brief (45 second) observation from only one of two observers. The primary field mark that the observer used to identify this species was the white stripe in the primaries. This characteristic is not unique to Pauraque and is shared not only by nighthawks but some other neotropical caprimulgids. The diagnostic tail pattern was not described. The details of this observation do not warrant the addition of this species to the Louisiana list. In addition, Pauraque does not exhibit a pattern of vagrancy.

ALLEN'S HUMMINGBIRD

One immature male (87-27) on 7 Dec. 1984, *East Baton Rouge*: Baton Rouge. This record was submitted as a possible Allen's Hummingbird based on a brief observation of the bird's flight display. The display was suggestive of this species, but because of the brevity of the observation and the lack of a detailed plumage description, the supporting evidence does not warrant an

identification to species.

One immature male (86-51) on 7-12 Dec. 1985, *East Baton Rouge*: Baton Rouge. This record was withdrawn after the specimen (LSUMZ #126944) was re-examined by Thomas S. Schulenberg and identified as a Rufous Hummingbird.

SAY'S PHOEBE

One (86-70) on 25 Oct. 1986, *Cameron*: GR. The details of the observation included only a very skimpy description. Both the breast and belly were indicated as being rufous, which is incorrect for this species.

BROWN-CRESTED FLYCATCHER

One (87-1) on 24 Aug. 1986, *Jefferson*: Grand Isle. The description does not eliminate Great Crested Flycatcher, which would be much more likely at this time of the year. Purrington (1987, p. 102) reported this individual as an "apparent" Brown-crested Flycatcher.

BACHMAN'S WARBLER

One female (89-25) on 24 Apr. 1971, *Orleans*: New Orleans, City Park, Popp's Fountain. Although some aspects of the plumage description favored this species, the foraging behavior, very carefully described by the observer, was inconsistent with what is known for Bachman's Warbler, and was more suggestive of Hooded Warbler.

MACGILLIVRAY'S WARBLER

One adult (87-5) on 20 Dec. 1986 (SACBC), *Cameron*: Cameron, west side Hwy. 27 ferry landing at Natomes

Road (Cardiff & Dittmann 1987, p. 561, 1039). The brief description did not eliminate Mourning Warbler. The species should be deleted from the Sabine CBC or it should be amended to reduce this species to "*Oporornis* sp.".

GRAY-CROWNED YELLOWTHROAT

One (89-22) on 30 Apr. 1988, *Cameron*: Parish Route 529, HMBS. The description provided by the observer actually eliminated this species.

BLACK-THROATED SPARROW

One adult (84-10) on 27 Oct. 1975, *Caddo*: Shreveport (Purinton 1976, p. 86). The brief description submitted by only one of two observers, who saw the bird for only a matter of seconds, was judged to be insufficient grounds for adding this species to the state list.

SMITH'S LONGSPUR

Several, including one male (89-56) on 16 Nov. 1985, *Calcasieu*: Gum Cove Road at Southern Traditions hunting camp. The description and behavior (most notably that they were observed perched in small trees) of these birds were more suggestive of Vesper Sparrows; the observer had no prior experience with Smith's Longspur. Additionally, the tail pattern was incorrect for Smith's Longspur, and the observers were not able to see white on the "shoulder" (lesser upper wing coverts) of any of the birds, despite "good views of this area."

RED CROSSBILL

"Five (actual number anywhere from 3 to 12)" (89-2) on 26 May 1988, *Grant*: 8 mi. SSW Howcutt. The identification was based solely on vocalizations heard for 5-7 seconds of a flock passing overhead; the birds were never observed. The "kip-kip-kip-kip" call reported by the observer may have pertained to this species, but the observer did not discuss or eliminate the very similar sounding White-winged Crossbill, a long-shot possibility. One Member argued that, for a species this rare, identification should not be based on vocalization alone (in the absence of tape documentation).

COMMON REDPOLL

One adult (89-3) on 20 Jan. 1988, *Acadia*: Crowley. The description was very rudimentary. Members did not feel that the brief description by a single observer, although suggestive of this species, should warrant addition to the Louisiana list.

The following records were considered unacceptable because of questionable wild origin:

HARRIS'S HAWK

One adult (89-17) on 4 Dec. 1988, *Cameron*: HMBS (Muth 1989, p. 325). Members felt that this bird was correctly identified, despite the rather brief written description and account of the observation submitted by only one of the two observers. All but one Member felt

that the bird was more likely a released/escaped individual rather than a natural vagrant because it was an adult and fairly tame. Additional information regarding intentional releases by at least one Louisiana falconer (letter from Richard Martin, Louisiana Natural Heritage Program, Louisiana Dept. of Wildlife and Fisheries) in the vicinity of "Lake Charles" further increases the possibility that this was not a natural vagrant, despite the fact that the species occasionally occurs on the central and upper Texas coast.

EURASIAN COLLARED-DOVE

One (89-5) on 24 and 28 April, two on 15 May 1988, *Orleans*: Ft. Pike (Imhof 1988, p. 447). The birds were correctly identified to species (ph). The LBRC decided that the probability that these doves originated from escaped cage birds was greater than the possibility that the birds reached Louisiana from populations in peninsular Florida that were established following expansion from the Bahamas (Smith 1987). The locality is adjacent to a settlement and at least one of the three birds present on 18 Feb. 1989 spent most of its time in the vicinity of one house, which was also home to turkeys, peafowl, and a large flock of Rock Doves. One Member also reported that the area "sports a pigeonnaire and an itinerant flock of various parrots."

The Review List

The LBRC solicits reports of

observations of species on the Review List. A species is placed on the Review List if it has been accepted to the Louisiana list and is reported four or fewer times per year averaged over a ten year period, or poses such a difficult identification problem that review is warranted. The Review List is periodically revised based on these criteria. Three additional recognizable forms or subspecies of species that are otherwise common in Louisiana, are currently included on this list: "Great White Heron" (Great Blue Heron), "Plumbeous Vireo" (Solitary Vireo), and "Gray-headed Junco" (Dark-eyed Junco). Since the publication of the Fifth Report (Schulenberg 1988), the following species have been added to the Review List: Common Merganser, White-winged Scoter, Lesser Nighthawk, Western Tanager, and Black-headed Grosbeak. Three species were removed from the Review List: Black-shouldered Kite, Swainson's Hawk, and Buff-bellied Hummingbird.

In addition to those species currently on the Review List, the LBRC solicits reports of all old unreviewed records of species that have been removed from previous Review Lists or records of species from prior to the date that they were added to the Review List. Records are requested for the following species prior to the date of removal indicated: Wilson's Storm-petrel (25 April 1986), Northern Gannet (25 April 1986), Black-shouldered Kite (11 March 1989), Swainson's Hawk (29 April

1988), Buff-bellied Hummingbird (29 April 1988), and Inca Dove (25 April 1986). The LBRC solicits reports for records of any species not currently on the Louisiana list, including species or individuals that may be of captive/introduced origin. Notable examples are Black Francolin, Ring-necked Pheasant, and Monk Parakeet. There is little or no information regarding the status of these species in the LBRC or *American Birds* files. The LBRC has decided to list House Finch as an *introduced* species. The continuing expansion of the introduced eastern population most likely accounts for all Louisiana records. There is no established pattern of vagrancy of individuals from the species' natural range to eastern North America. Thus, the status of House Finch in Louisiana parallels that of European Starling and House Sparrow.

Official LBRC Report Forms are available from the LBRC Secretary, Museum of Natural Science, 119 Foster Hall, Louisiana State University, Baton Rouge, LA 70803. The forms are sent free of charge. Contributors are encouraged to use the LBRC Form or format when submitting documentation and to include all supplemental documentation available: photographs, tape recordings, and copies of fieldnotes and sketches. For a discussion of how to provide documentation for Review List species, see Dittmann and Cardiff 1990.

Review List:

Red-throated Loon, Least Grebe, Red-necked Grebe, Western Grebe, Yellow-nosed Albatross, Greater Shearwater, Audubon's Shearwater, Leach's Storm-petrel, Masked Booby, Brown Booby, Red-footed Booby, "*Great White Heron*,"

Tundra Swan, Trumpeter Swan (e), Ross's Goose, Brant, Eurasian Wigeon, White-winged Scoter, Common Merganser, Masked Duck, Northern Goshawk, White-tailed Hawk, Zone-tailed Hawk, Ferruginous Hawk, Rough-legged Hawk, Golden Eagle,

Greater Prairie Chicken (e), Yellow Rail, Black Rail, Whooping Crane (e), Mongolian Plover, Eskimo Curlew, Purple Sandpiper, Curlew Sandpiper, Ruff, Red-necked Phalarope, Red Phalarope, Pomarine Jaeger, Parasitic Jaeger, Long-tailed Jaeger,

Little Gull, California Gull, Thayer's Gull, Lesser Black-backed Gull, Glaucous Gull, Great Black-backed Gull, Black-legged Kittiwake, Sabine's Gull, Roseate Tern, Arctic Tern, Bridled Tern, Brown Noddy, Ancient Murrelet,

Band-tailed Pigeon, Flammulated Owl, Snowy Owl, Long-eared Owl, Northern Saw-whet Owl, Lesser Nighthawk, Antillean Nighthawk, Vaux's Swift, Anna's Hummingbird, Calliope Hummingbird, Broad-tailed Hummingbird, Allen's Hummingbird, Williamson's Sapsucker, Ivory-billed Woodpecker, Western Wood-Pewee,

Alder Flycatcher, Willow Flycatcher, Hammond's Flycatcher, Say's Phoebe, Ash-throated Flycatcher, Brown-crested Flycatcher, Great Kiskadee, Sulphur-bellied Flycatcher,

Tropical Kingbird, Couch's Kingbird, Cassin's Kingbird, Gray Kingbird, Rock Wren, Northern Wheatear, Mountain Bluebird, Varied Thrush, Sage Thrasher, Curve-billed Thrasher, "*Plumbeous Vireo*", Black-whiskered Vireo, Bachman's Warbler,

Virginia's Warbler, Lucy's Warbler, Tropical Parula, Black-throated Gray Warbler, Townsend's Warbler, Hermit Warbler, MacGillivray's Warbler, Painted Redstart, Hepatic Tanager, Western Tanager, Black-headed Grosbeak, Blue Bunting, Lazuli Bunting, Green-tailed Towhee, American Tree Sparrow, Brewer's Sparrow,

Lark Bunting, Golden-crowned Sparrow, "*Gray-headed Junco*", McCown's Longspur, Smith's Longspur, Chestnut-collared Longspur, Hooded Oriole, Scott's Oriole, House Finch (i), Red Crossbill, Lesser Goldfinch.

e = extirpated

i = introduced

Recognized forms or subspecies are italicized.

Corrigendum

The report of a Glaucous Gull (88-35) in Schulenberg (1988) was incorrectly attributed to K.V. Rosenberg; the report was in fact submitted by Joe Kleiman.

Abbreviations

(LSUMZ #) = specimen deposited at LSUMNS (catalogue number follows).

(ph) = photograph (s) submitted.

(c) = *American Birds* 3 x 5 card submitted as documentation.

(ur) = Report Form received after review was complete.

Localities: EJW (East Jetty Woods, 2 mi. S Cameron); GR (Garner Ridge, 3 mi. W Johnsons Bayou School); HMBS (Holleyman Migratory Bird Sanctuary); HR (Hackberry Ridge, 2 mi. WSW Johnsons Bayou School); OMMR (old mouth Mermentau River = "Rutherford Beach").

Christmas Bird Counts: CRCBC (Crowley); GICBC (Grand Isle); JBCBC (Johnsons Bayou); SACBC (Sabine NWR); SHCBC (Shreveport); THCBC (Tunica Hills-St. Francisville).

The following initials belong to individuals who were listed by the reporting observer(s) as "other observer," but did not themselves submit a report: JA (James Arnold); CB (Charles Butterworth); JB (John Bates); LB (Louis Bevier); CC (Catherine Cummins); DBC

(D. Bruce Crider); SWC (Steven W. Cardiff); BD (Bill Dobbins); BED (Brian E. Daniels); DLD (Donna L. Dittmann); MD (Miriam Davey); TJD (Tristan J. Davis); CF (Chuck Feerick); JF (Joan Feerick); BG (Barbara Guglielmo); CRG (Charles R. Goudchaux); JG (Jeff Greenhouse); JAG (John A. Gerwin); MG (Mary Garvin); SG (Steve Gary); DH (David Hunter); DHa (Dudley Harrington); JH (Jim Holmes, Jr.); LH (Lucille Hendrick); SH (Shannon Hackett); SHo (Steve Hope); HJ (Horace Jeter); RJ (Richard Jeffers); AK (Angela Chapman-Kofron); CK (Cecil Kersting); HK (Howard Kisner); JK (Joe Kleiman); NK (Nedra Klein); TK (Tom Kee); BMM (B. Mac Myers III); CM (Curtis Marantz); DPM (David P. Muth); HM (Henry Miller); PM (Paul McKenzie); PPM (Peter P. Marra); S&NN (Skip & Nancy Newfield); T&AM (Tom & Ann Marie Moorman); RN (Robert Newman); GO (Glenn Oussett); EPP (E. P. Putman III); RDP (Robert D. Purrington II); CEQ (Carlos E. Quintela); GR (Gregor Rohwer); GHR (Gary H. Rosenberg); JVR (J. V. Remsen); KVR (Kenneth V. Rosenberg); SAR (Sievert A. Rohwer); A&GS (Al & Gwen Smalley); G&DS (Greg & Donna Schmitt); GSh (Gary Shugart); JS (Jim Stewart); JPS (John P. Sevenair); MMS (M. Mark Swan); PS (Paul Sunby); PES (Peter E. Scott); MT (Marianna Tanner); CV (Charlie Viers); DV (Dennis Varza); DW (David Wingate); DRW (Douglas R. Willick); JW (Jim Whelan); MW (Melvin Weber); WY (Wang Yong); RMZ (Robert M.

Zink).

Acknowledgements

I would like to thank Steven W. Cardiff, Paul M. McKenzie, J. V. Remsen, and Alfred E. Smalley for helpful comments on the manuscript.

Literature Cited

- AMERICAN ORNITHOLOGISTS' UNION. 1983. Check-list of North American Birds, Sixth ed., Lawrence, Kansas, Amer. Ornithol. Union.
- _____. 1985. Thirty-fifth supplement to the American Ornithologists' Union *Check-list of North American Birds*. Auk 102: 680-686.
- CARDIFF, STEVEN W. & DONNA L. DITTMANN. 1987. Regional Summary for Arkansas and Louisiana. 87th Christmas Bird Count. Amer. Birds 41 (4): 560-561.
- _____. 1988. Regional Summary for Arkansas and Louisiana. 88th Christmas Bird Count. American Birds 42 (4): 547-550.
- _____. 1989. Regional Summary for Arkansas and Louisiana. 89th Christmas Bird Count. American Birds 43 (4): 597-600.
- CARDIFF, STEVEN W., DIANE E. LORIA, and WANG YONG. 1991.

First Louisiana and Easternmost United States Record of Hooded Oriole (*Icterus cucullatus*). *J. La. Ornith* 1 (2): 49-53.

DITTMANN, D. L. and STEVEN W. CARDIFF. 1990. How to provide documentation for Review List species. *L.O.S. News*, No. 135.

GRANT, P. J. 1982. Gulls, a guide to identification. Buteo Books. Vermilion, South Dakota.

HAMILTON, ROBERT B. 1977. Central Southern Region. *American Birds* 31 (3): 365.

_____.& ROBERT J. NEWMAN. 1978. Regional Summary for Arkansas and Louisiana. 78th Christmas Bird Count. *Amer. Birds* 32 (4): 336-341.

IMHOF, THOMAS A. 1986. Central Southern Region. *Amer. Birds* 40 (3): 485.

_____. 1987. Central Southern Region. *Amer. Birds* 41 (3): 442-447.

_____. 1988. Central Southern Region. *Amer. Birds* 42 (3): 444-449.

JACKSON, JEROME A. 1986. Central Southern Region. *Amer. Birds* 40 (5): 1214.

_____. 1988. Central Southern Region. *Amer. Birds* 42 (5): 1299-1303.

LOWERY, GEORGE H., JR. 1974.

Louisiana birds. Louisiana State University Press.

MUTH, DAVID P. 1985. Central Southern Region. *Amer. Birds* 39 (2): 177.

_____. 1986. Central Southern Region. *Amer. Birds* 40 (2): 289-292.

_____. 1987. Central Southern Region. *Amer. Birds* 41 (2): 290-294.

_____. 1988. Central Southern Region. *Amer. Birds* 42 (2): 274-279.

_____. 1989. Central Southern Region. *Amer. Birds* 43 (2): 323-327.

NEWMAN, ROBERT J. 1976. Regional Summary for Arkansas and Louisiana. 76th Christmas Bird Count. *Amer. Birds* 30 (2): 174.

_____. 1985. Regional Summary for Arkansas and Louisiana. 85th Christmas Bird Count. *Amer. Birds* 39 (4): 415-416.

_____. 1986. Regional Summary for Arkansas and Louisiana. 86th Christmas Bird Count. *Amer. Birds* 40 (4): 1052-1053.

PURRINGTON, ROBERT D. 1976. Central Southern Region. *Amer. Birds* 30 (1): 86.

_____. 1985. Central Southern Region.

Amer. Birds 39 (1): 66.

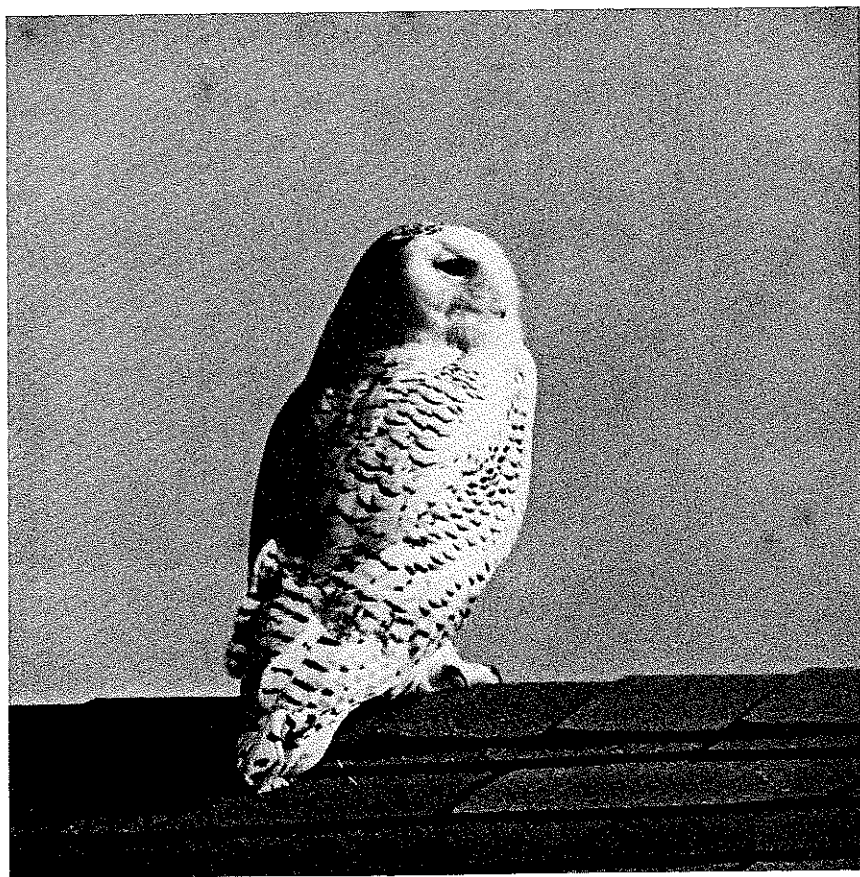
_____. 1987. Central Southern Region.
Amer. Birds 41 (1): 99-103.

_____. 1988. Central Southern Region.
Amer. Birds 42 (1): 85-91.

_____. 1989. Central Southern Region.
Amer. Birds 43 (1): 114-120.

SCHULENBERG, T. S. 1988. Fifth
Report of the Louisiana Ornithological
Society Bird Records Committee. Jour.
Louisiana Ornith. 1 (1): 15-23.

SMITH, P. WILLIAM. 1987. The
Eurasian Collared-Dove arrives in the
Americas. Amer. Birds 41 (5): 1370-
1379.



Snowy Owl present at Cross Lake, Caddo Parish, Louisiana from 13 December 1976 to 21 February 1977. Photograph by Langston McEachern, 16 December 1976. Courtesy of Shreveport Times.